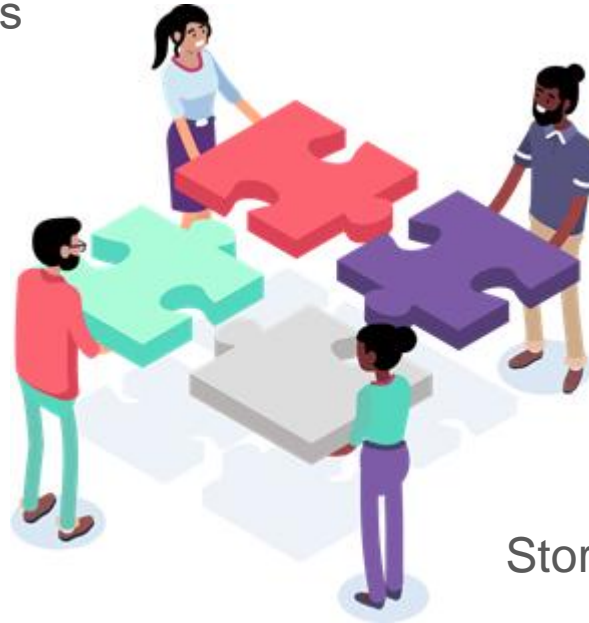


# LIGHTWORK

“Many hands  
make light  
work”



Care

Lived-  
experience

Stories

# LightWork's shared ownership model

## Member-driven decision making

- Decisions made democratically by all members.
- Equal voice in shaping the cooperative's direction.
- Focus on flat management structure.
- Financial and operational participation.
- Transparency.
- Commitment to community and JEDDI (Justice, Equity, Decolonization, Diversity, Inclusion).

# JE-Decolonization-DI

Decolonizing the ways we do business is vital to our humanity.

Recognizing and addressing the impacts of colonialism, supporting Indigenous sovereignty, and striving to end oppression.

# Remember:

It's vital to acknowledge the various business models that perpetuate colonial structures, which often escalate wealth disparities, enriching the affluent while disadvantaging the underprivileged. These models thrive on systemic oppression, accumulating wealth at the expense of the powerless. Co-operatives like LightWork aim to subvert these systems, fostering a solidarity economy that is both ethical and sustainable. They strive to establish business practices that do not support or contribute to the atrocities associated with genocides and occupation.

# Thank you

Lightwork Team - Mohammed Zaqout

[team@lightworkcoop.ca](mailto:team@lightworkcoop.ca)

mohammed@solidstate.coop

Cell: 604-446-4431

